



155 Wandsworth Road, London
SW8

GARTONJONES.COM



155 Wandsworth Road, London
, SW8

GARTON JONES.COM

9 Albert
Embankment
London
SE1 7SP

Lettings:
+44 (0) 20 7735 1888
nineelms@gartonjones.com
www.gartonjones.com

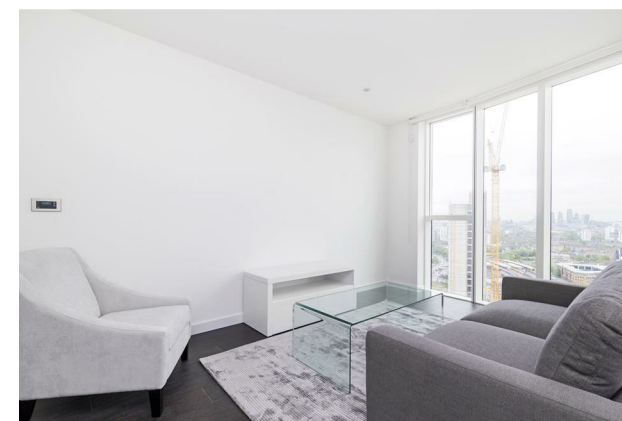
£700 Per Week

A stunning 2-bedroom apartment on the 25th floor (with lift) of approx. 731sq.ft (67.9sq.m) available to rent in the very popular Sky Gardens development. This property benefits from floor to ceiling windows and quite spectacular views. Further benefits include an open plan reception room, integrated kitchen with Siemens appliances (or similar), a Winter garden of approx. 51sq.ft (4.7sq.m), 2 luxury bathroom suites, comfort cooling to the reception and bedroom, under floor heating, a 24-hour concierge and residents also have access to a smart gymnasium located in the 8th floor sky garden. Sky Gardens is located almost directly opposite the entrance to the Nine Elms Tube extension as well as being a few minutes' walk from the excellent transport services of Vauxhall.

Please note furniture may differ to that shown in the current photos.

- Electricity Supply — Mains | Water Supply — Mains | Sewerage — Mains | Heating — Comfort Cooling
- Broadband & Mobile Signal : Check Coverage via Ofcom
- Parking: No Parking Included
- Lift Access
- Building Safety: EWS1 Available on Request
- Council Tax Band F (London Borough of Lambeth)
- 5 Week Security Deposit
- Holding deposit equivalent to 1 week of rent
- Rent to be payable monthly in advance
- EPC Rating B (84)

- 2 Bedrooms
- 731sq.ft (67.9sq.m)
- 2 Bathrooms (1 En-Suite)
- Open Plan Reception Room
- Modern Kitchen
- Comfort Cooling
- Residents Gym
- 24 Hour Concierge
- 35th Floor Roof Terrace
- 0.2 Miles to Nine Elms Tube Station





Living / Kitchen	6.5m x 3.4m	21'3"ft x 11'2"ft
Master Bedroom	5.1m x 4.2m	16'8"ft x 13'9"ft
Bedroom Two	4m x 2.4m	13'1"ft x 7'10"ft
Ensuite	2.4m x 1.4m	7'10"ft x 4'7"ft
Bathroom	2m x 2.1m	6'6"ft x 6'10"ft
NET SALEABLE AREA	67.9 SQ M	731 SQ FT
Winter Garden	4.2 SQ M	45 SQ FT

